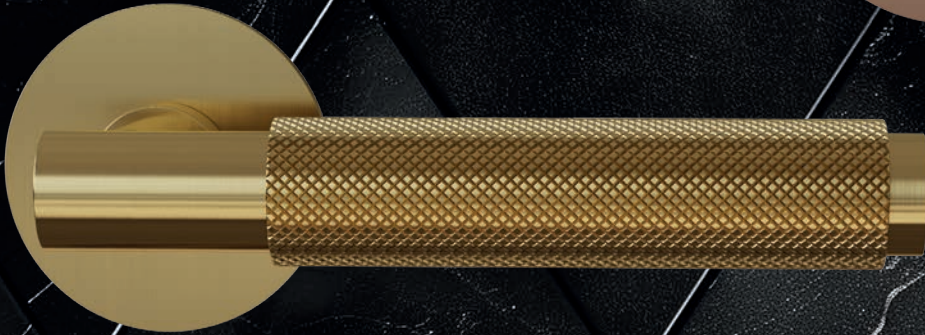
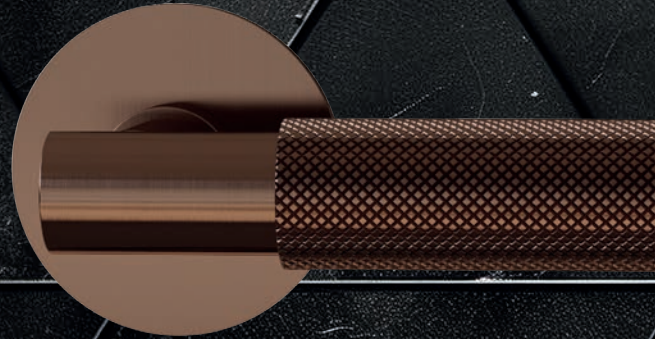
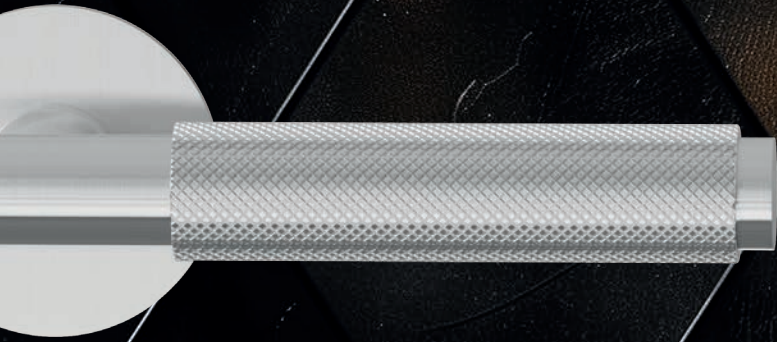


HAFI



Design 216

CONTENT

Page 4 Details - precision and inspiration in detail

Page 6 Give your handle your own personal touch

Page 8 HAFI PVD colours - elegance meets durability

Page 20 Cross-trade - consistent design and uncompromising quality

Page 22 HAFI Design 216 - Product overview

Page 26 Sustainability - Sustainable building for the future

Page 28 About HAFI - Tradition, innovation and quality

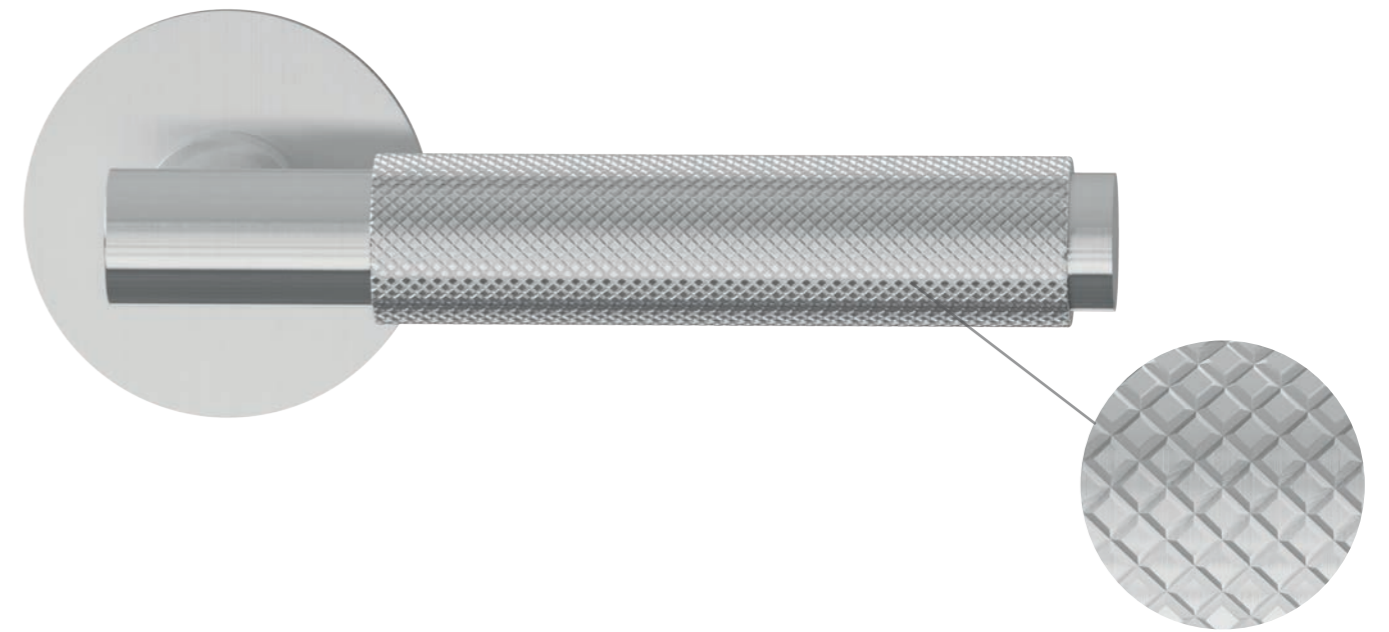
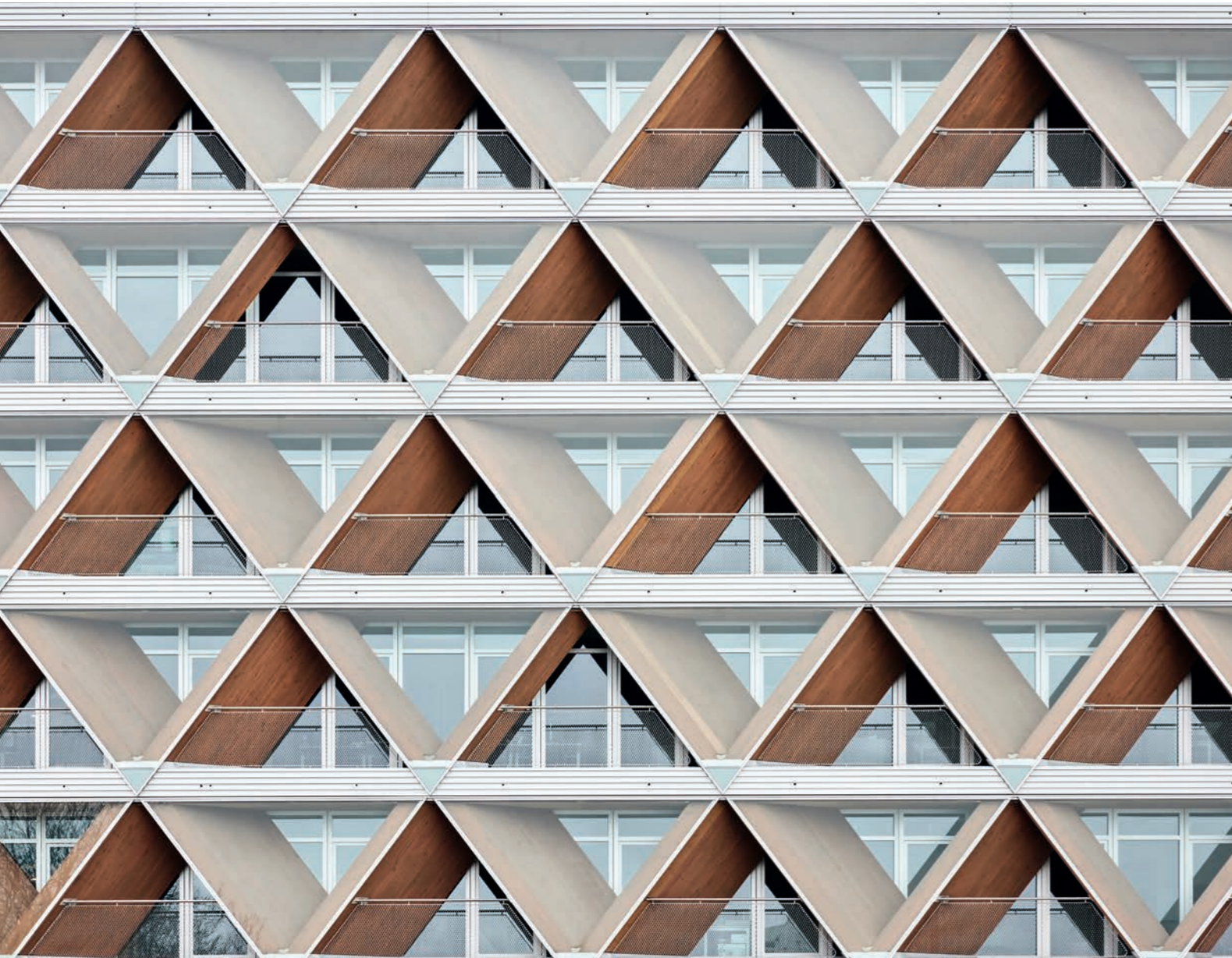
Page 32 References

„Good design is thorough down to the last detail.“

Dieter Rams, Designer

Details

Precision and inspiration in detail



Inspired by the facade of the reference building 'The Cradle'

The HAFI Design 216 was inspired in part by the striking wooden facade of 'The Cradle' building in Düsseldorf, designed by HPP Architekten. In particular, the diamond-shaped elements of the exterior facade were integrated into the design of the door handle. In this way, the structure of the handle contributes to the characteristic look, while the overall design is given its unique character by other elements.

Reference - The Cradle, Düsseldorf

Give your handle your own personal touch!

Rosette

Round

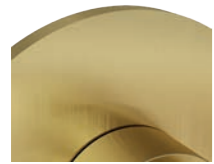
Square



Stainless steel matt



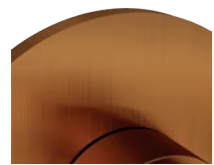
Stainless steel matt



Brass matt



Brass matt



Rose gold matt



Rose gold matt



Dark bronze matt



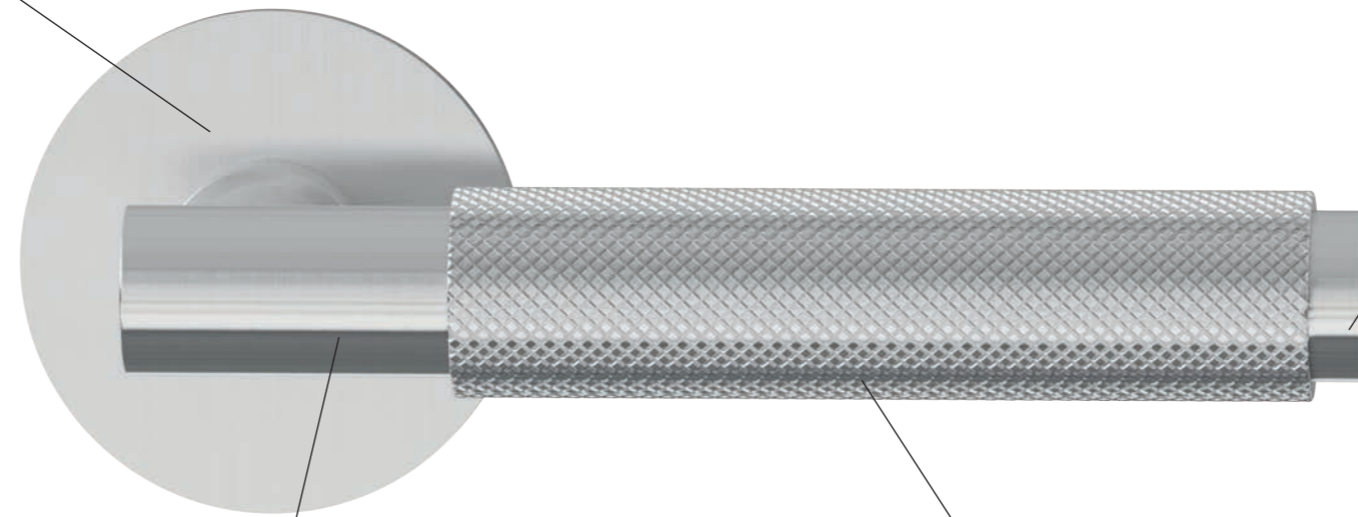
Dark bronze matt



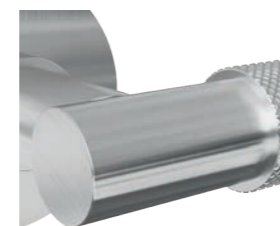
Black matt



Black matt



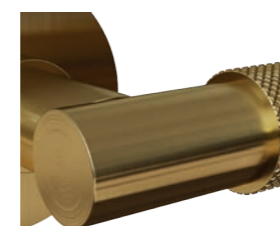
Lever neck



Stainless steel matt



Dark bronze matt



Brass matt

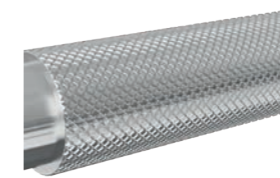


Black matt



Rose gold matt

Handle



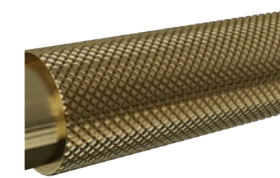
Stainless steel matt



Dark bronze matt



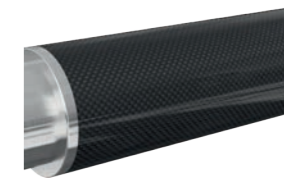
Real wood | light oak



Brass matt



Black matt



Carbon



Rose gold matt

Endcap



Stainless steel matt



Brass matt



Rose gold matt



Dark bronze matt



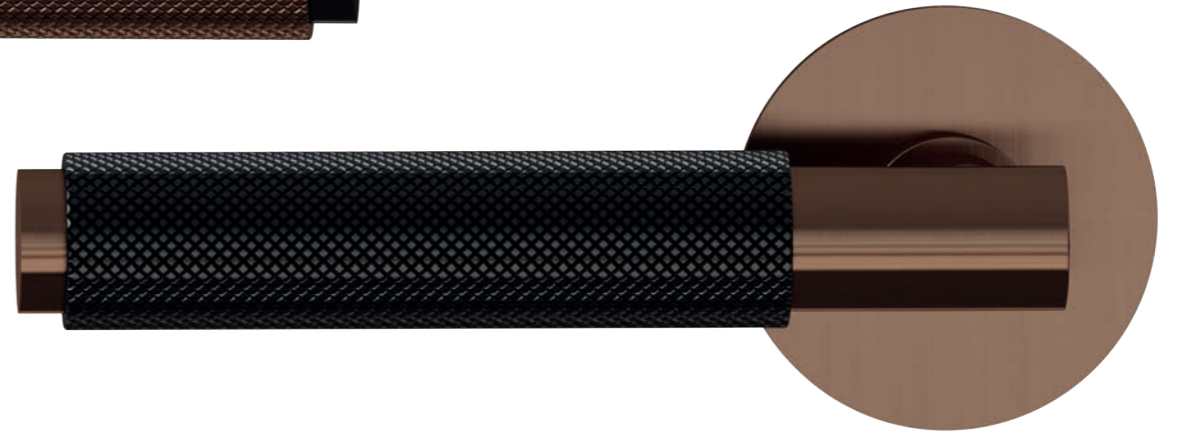
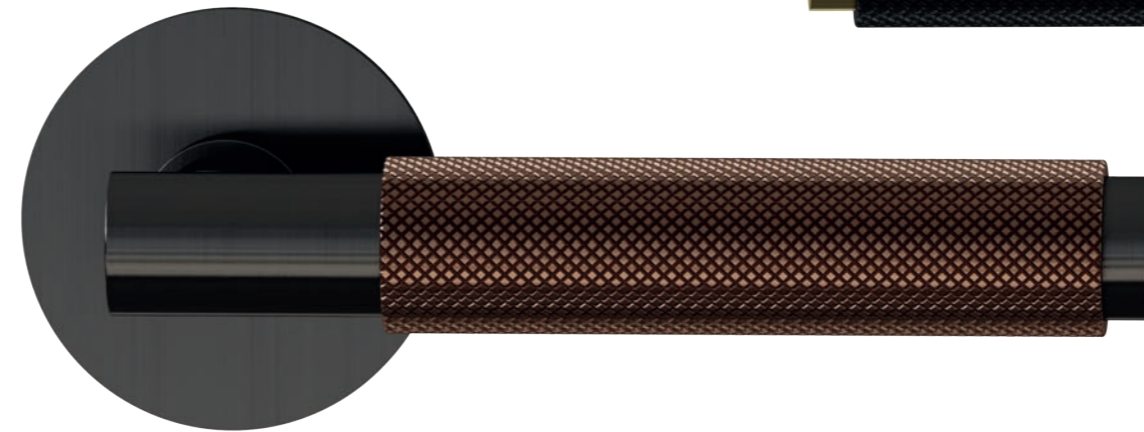
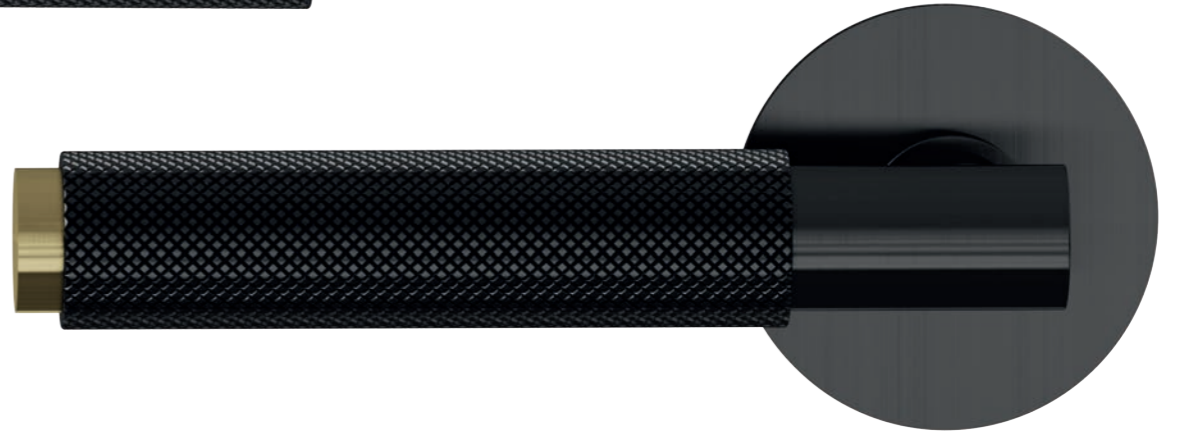
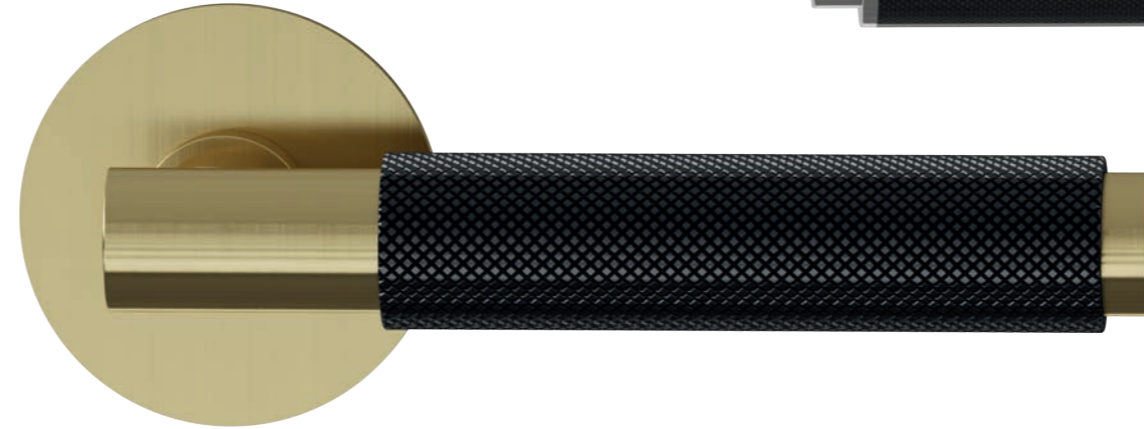
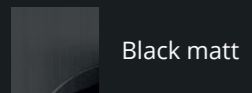
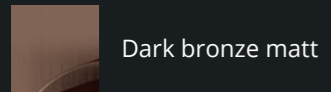
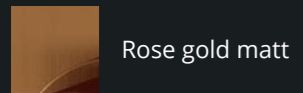
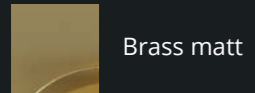
Black matt

HAFI PVD Farben

Elegance meets durability

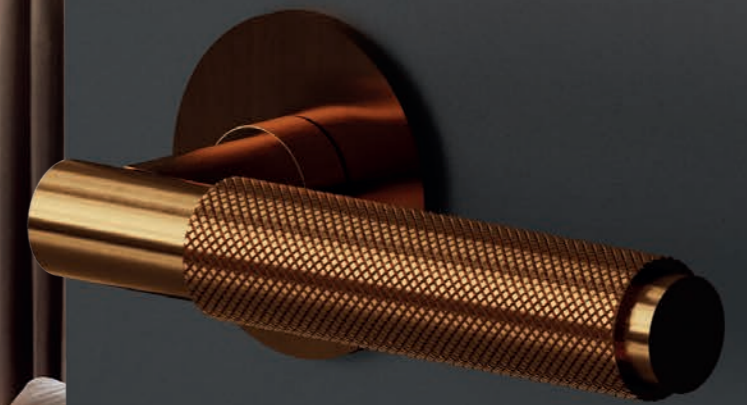
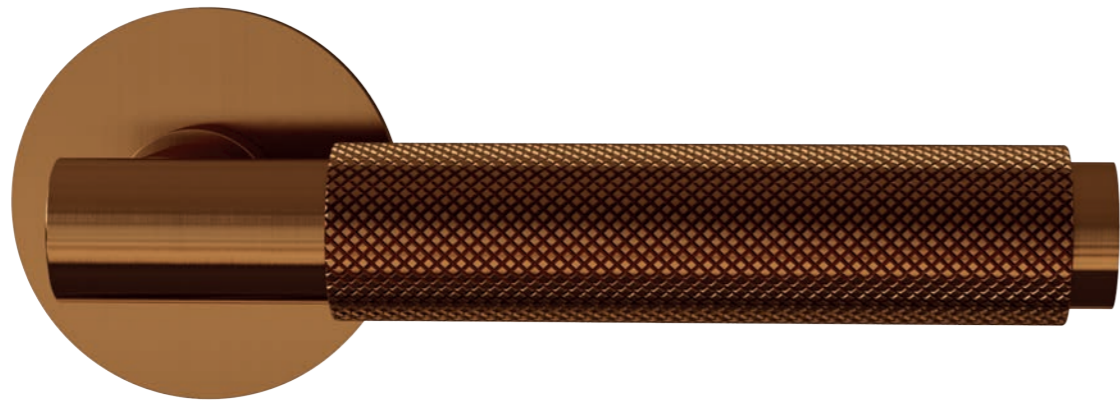
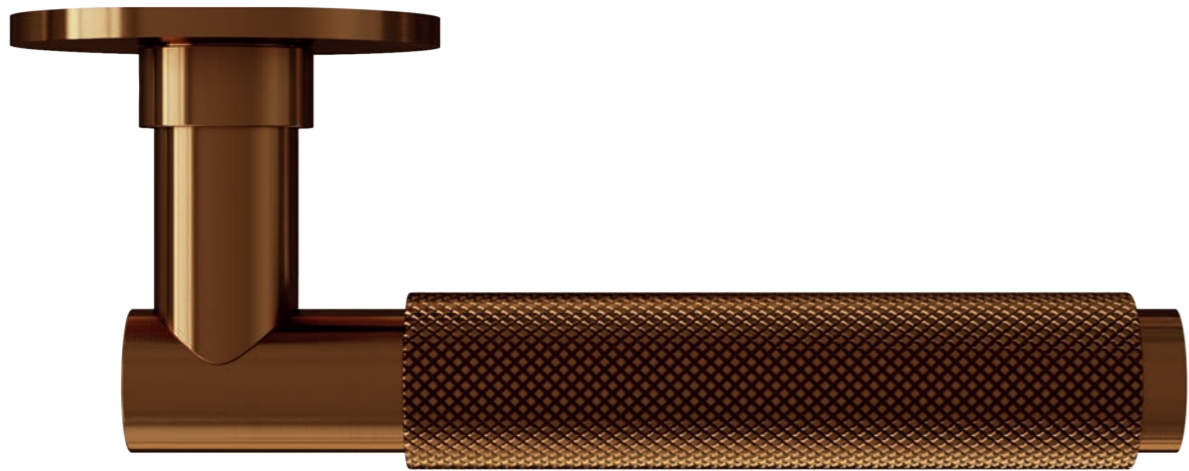
Brass, rose gold, dark bronze or black - set accents with PVD-coated fittings. In addition to brilliant colour intensity, the PVD coating shines with excellent scratch and wear resistance. These fittings are guaranteed to attract everyone's attention!

Design your lever handle to perfectly match your style and interior. Whether classic, modern or extravagant - with our customised solutions, you can set individual accents and make your lever handle a unique highlight.



HAFI Design 216 | 870

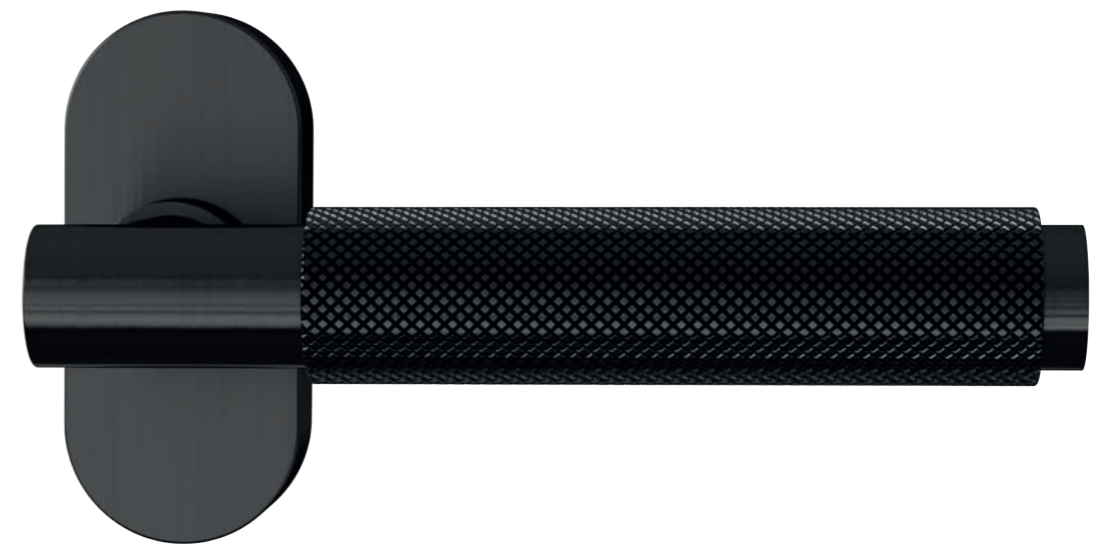
PVD rose gold





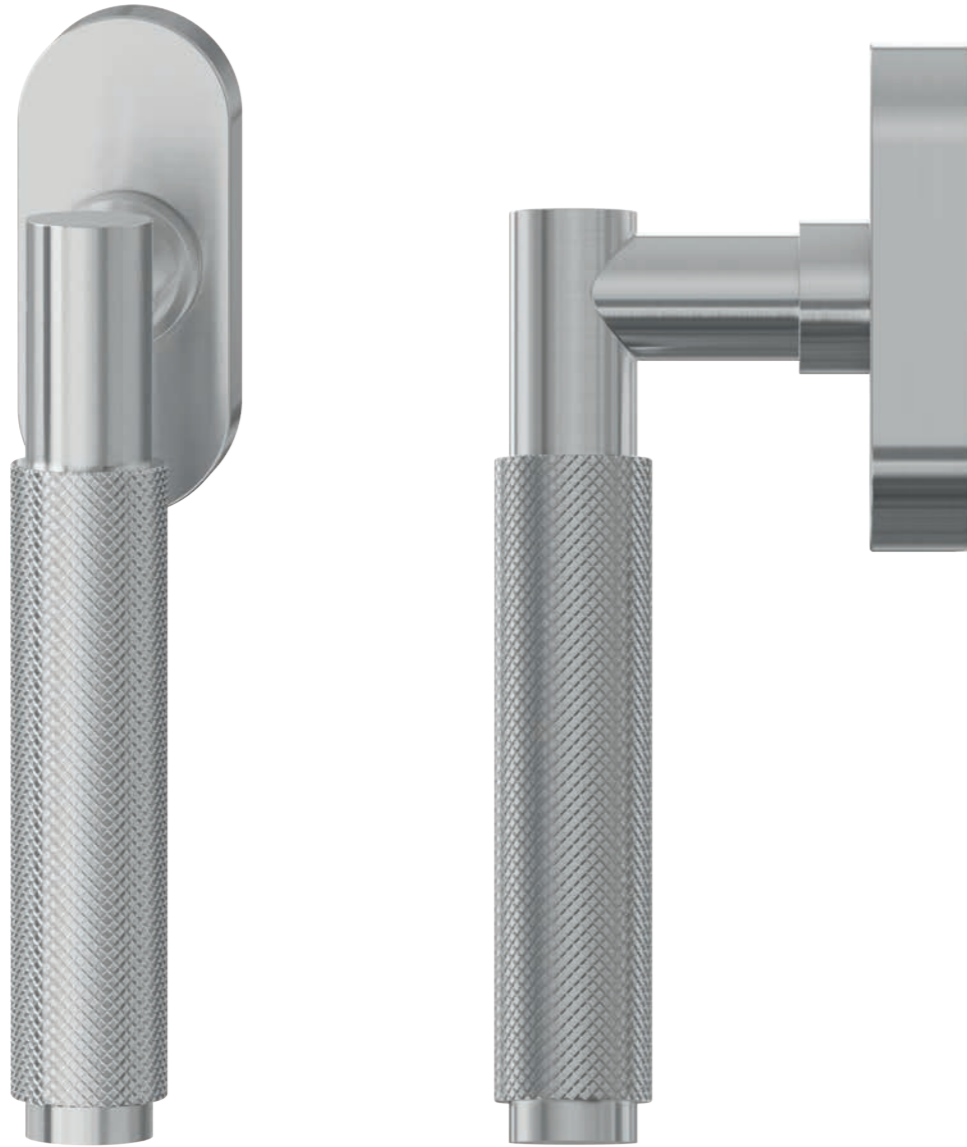
HAFI Design 216 | 788

PVD black



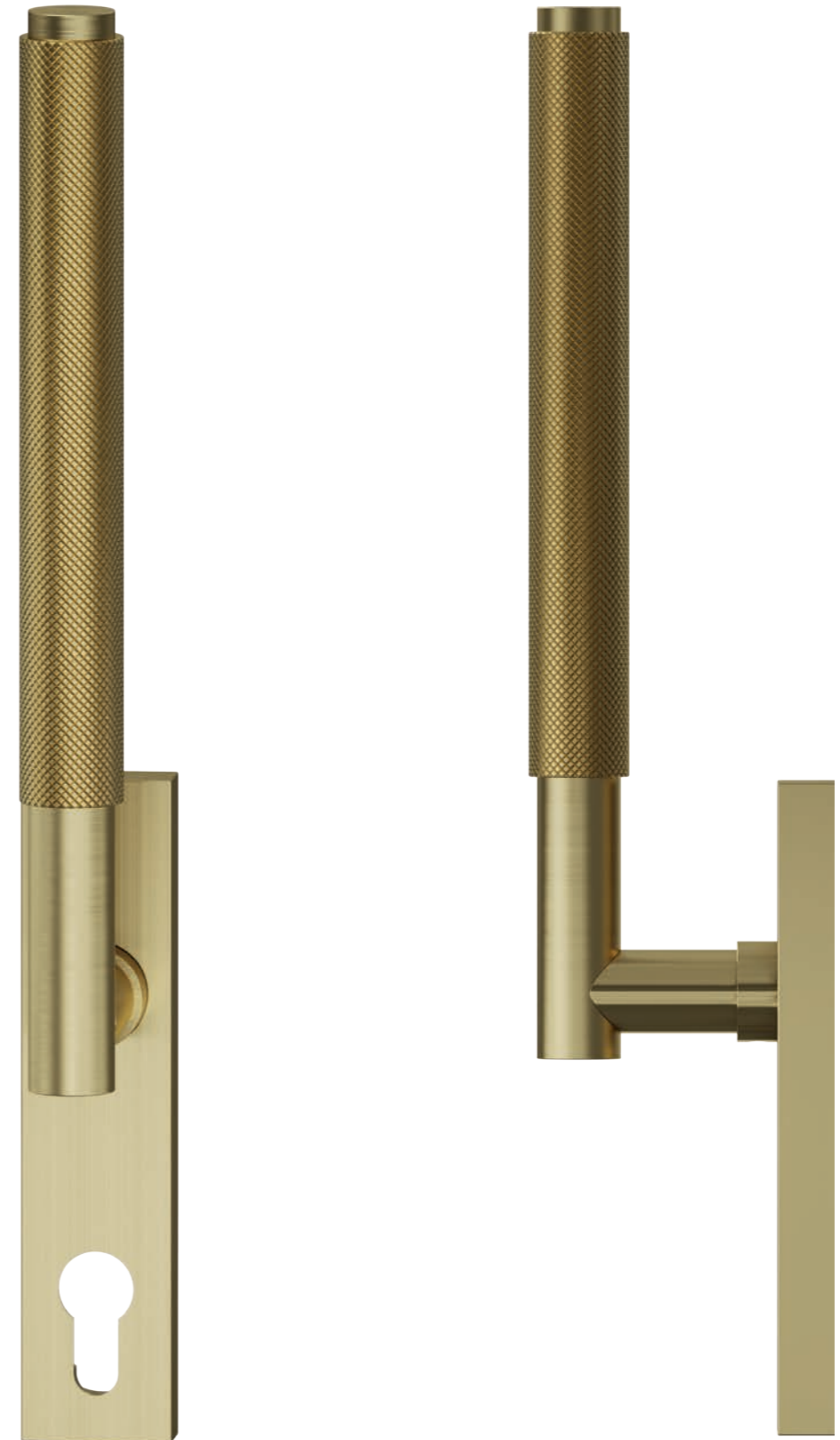
HAFI Design 216 | 430

Stainless steel matt



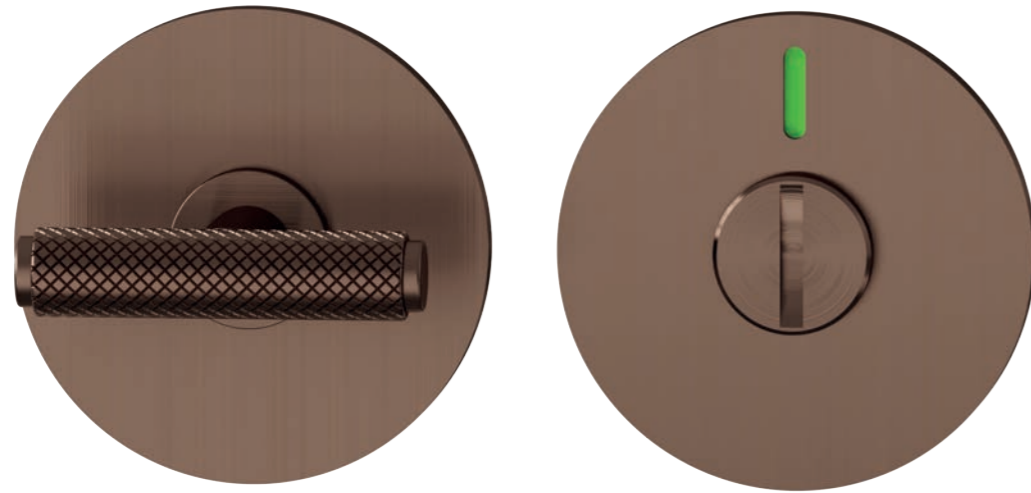
HAFI Design 216XXL | 451

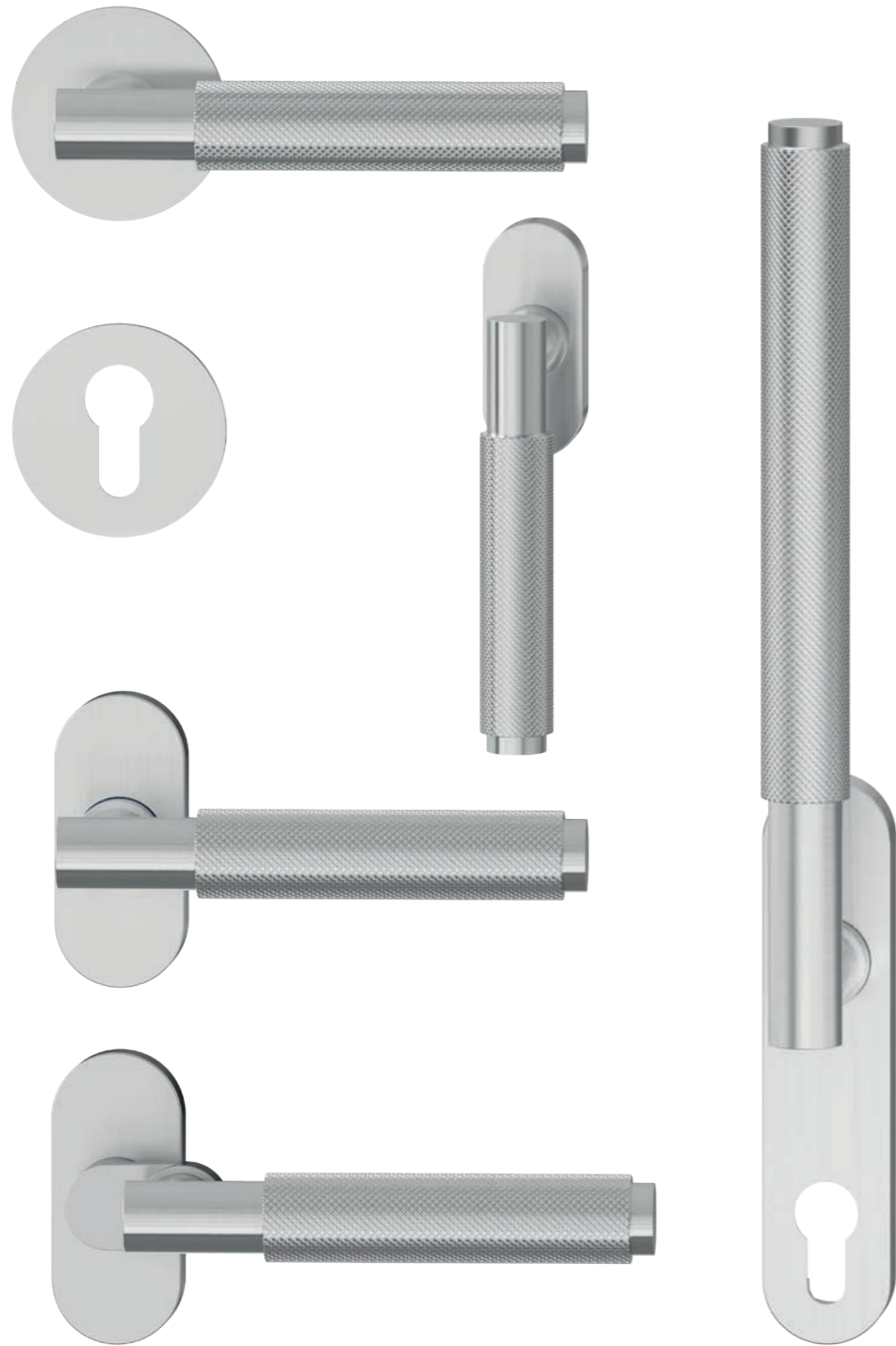
PVD brass



HAFI Design 216 | WC

PVD dark bronze





Cross-trade

Consistent design and uncompromising quality

One design for all trades

Whether windows, interior doors, profile doors or lift and slide doors - our fittings can be combined with different materials and door types across all trades. This gives you a perfect combination of consistent aesthetics and high functionality without compromise.

The standard-compliant combination options allow you to create a harmonious and aesthetic overall concept that exceeds your expectations.

German Design Award 2025

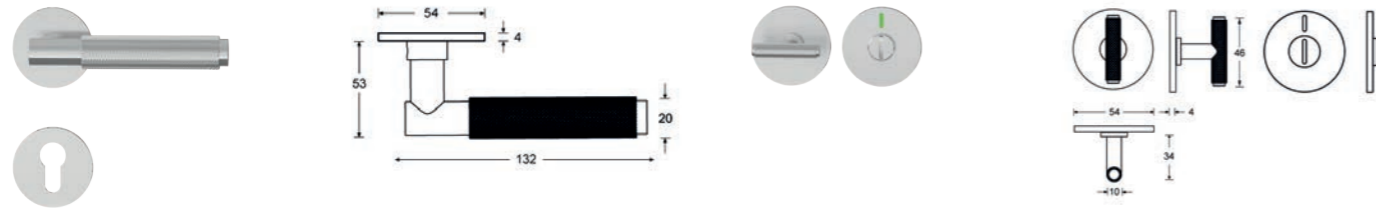
The HAFI Design 216 was honoured with the prestigious German Design Award 2025 in the 'Excellent Product Design - Building and Elements' category.

The German Design Award sets international standards for innovative design developments and is presented by the German Design Council. It is recognised worldwide as a benchmark for outstanding design innovations and underlines competitiveness on the global market. Only projects that are recognised both in Germany and internationally as internationally recognised as trend-setting in the field of design.



Design 216

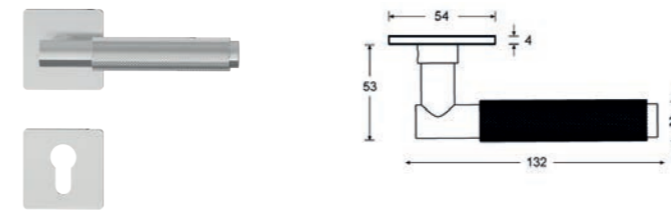
Object fittings | Plain doors round



216 | 870 | 871PZ

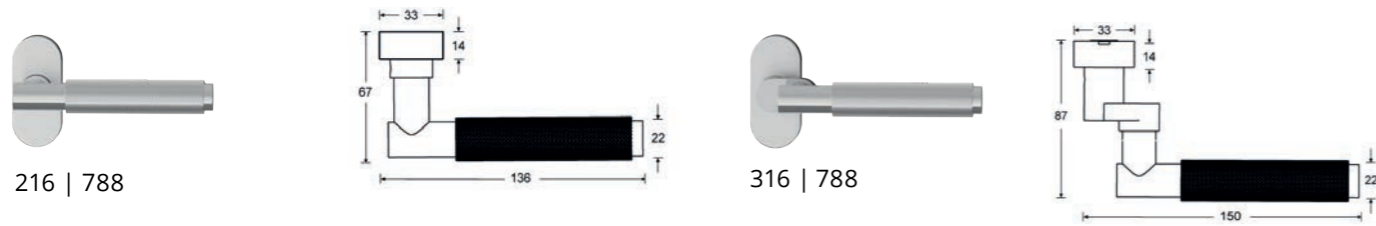
216 | 879 | 872

Object fittings | Plain doors square



216 | 880 | 881PZ

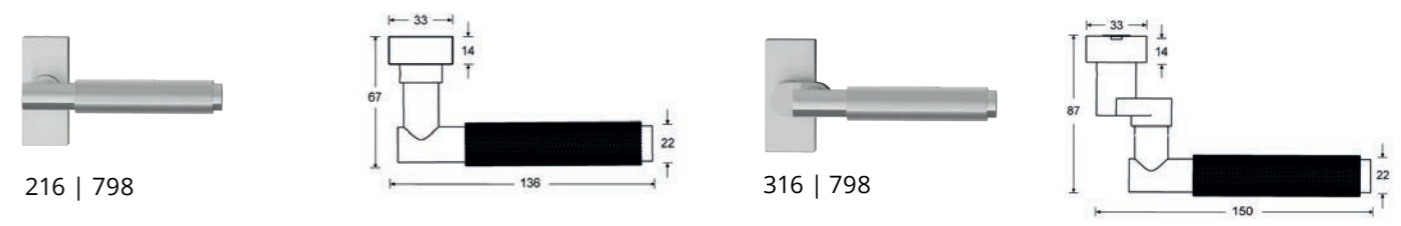
Object fittings | Frame doors round



216 | 788

316 | 788

Object fittings | Frame doors square



216 | 798

316 | 798

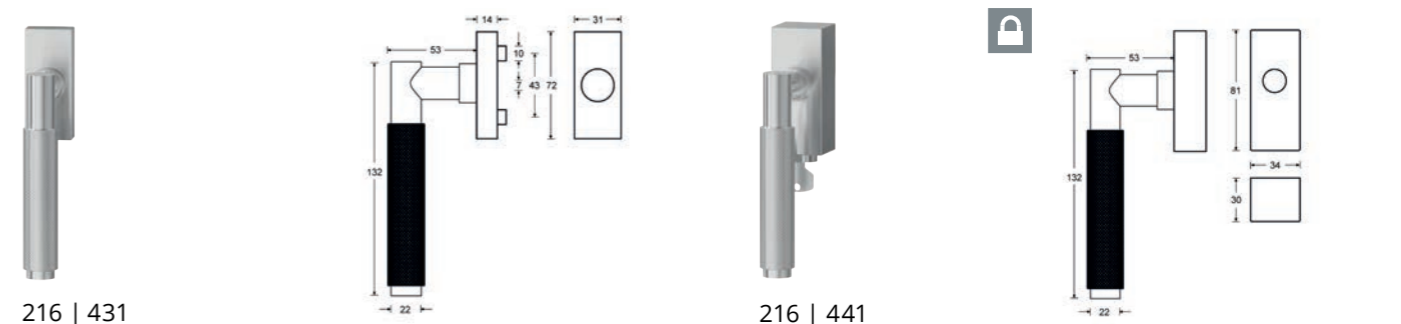
Object fittings | Window handles round



216 | 430

216 | 440

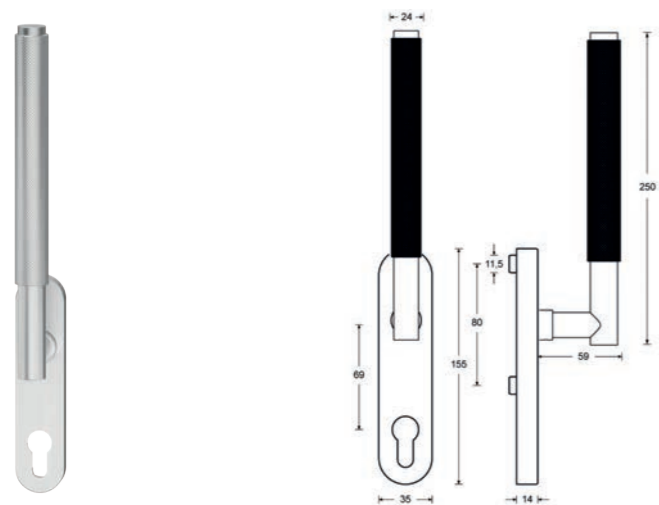
Object fittings | Window handles square



216 | 431

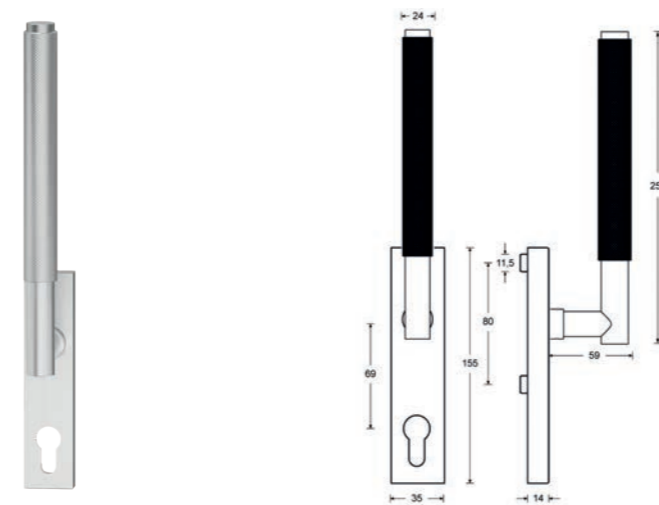
216 | 441

Object fittings | Lifting sliding door handles round



216XXL | 450

Object fittings | Lifting sliding door handles square



216XXL | 451



Sustainability

Sustainable building for the future

Environmental protection at HAFI

As a member of the Deutschen Gesellschaft für nachhaltiges Bauen e.V. (DGNB) and the Institut Bauen und Umwelt e.V., we identify with the guiding principles of sustainable building.

In order to make sustainable building practically applicable, measurable and therefore comparable, the DGNB has developed its own internationally recognised certification system. The independent certification process serves the purpose of transparent quality control.

Environmental Product Declaration (EPD)

Environmental Product Declarations (EPD/ Environmental Product Declaration) in accordance with ISO 14025 and EN 15804 basis for assessment to make the real sustainability of products measurable.

To this end, the environmental impact along the product life cycle is analysed from production to disposal. The origin and type of raw materials are taken into account, as are the entire manufacturing process and the energy sources used, the transport routes, the product's service life and its recyclability.

The key figures analysed include reuse, recovery and recycling potential, as well as global warming potential and energy recovery potential.



EPD - HAFI window handles



EPD - HAFI door handle sets

Request EPDs via vertrieb@hafi.de



About HAFI

Tradition, innovation and quality

Since 1978

Hans Fink founded the HAFI company in 1978. Today, the company is managed by René Fink and Jochen Maier.

At the Elchingen site in Germany, we develop and manufacture fittings for customers from all over the world. Our employees are passionate about their work and give their best for our customers every day. In 2023, HAFI produced 450,000 hardware units for doors and windows.

Hardware products – We form stainless steel

HAFI manufactures a wide range of hardware products from stainless steel. Shape and surface finish can be realised individually. Whether matt brushed or polished, stainless steel surfaces are robust, elegant and timeless. Thanks to the very smooth and non-porous surface, stainless steel lever handles are very dirt-resistant and durable.

Customised according to customer requirements

We turn our customers' designs into reality and support them from the design stage through prototype construction to the delivery of the project across all trades.

Cross-trade

We offer the right solution for every type of building and every requirement. From lever handles for residential buildings to electronic locking systems.

Simple assembly

Our hardware proves that design and technology are not mutually exclusive. An example of this is our latest development - the Flush Line technology for windows, doors and lifting sliding doors. Thanks to our patented 'Push-Click' function, the Flush Line fittings are particularly easy and innovative to install.





HAFI - Partner of architecture

Reference - Cheval Blanc, St. Tropez





FOUR, Frankfurt



Europazentrale Mercateo, Leipzig



Bundesministerium für Gesundheit, Berlin



Europäische Zentralbank, Frankfurt



Museum Barberini, Potsdam



Omniturm, Frankfurt



Deka Bank, Frankfurt



Landtag Brandenburg, Potsdam



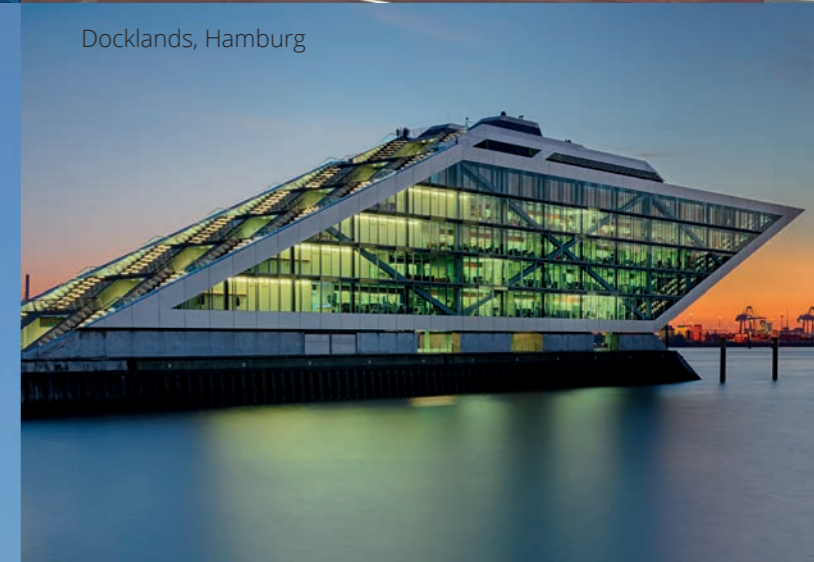
Hotel Lutetia, Paris



ADAC Headquarter, München



Eclipse, Düsseldorf



Docklands, Hamburg



DB Tower, Frankfurt



Marieturm, Frankfurt



Landeskriminalamt, Dresden



Henninger Turm, Frankfurt

Imprint

HAFI Beschläge GmbH
Weißinger Straße 16
89275 Elchingen, Deutschland
Tel +49 (0) 7308 9604 0
info@hafi.de

CEO René Fink | CEO Jochen Maier
USt-IdNr. DE 811504155

Pictures

Brigida González | www.brigidagonzalez.de
Cheval Blanc, St. Tropez | www.chevalblanc.com
dreipunkt Design Agentur | www.agentur-dreipunkt.de
Fritz Brunier | www.fritzbrunier.de
Groß & Partner Grundstücksentwicklungsgesellschaft mbH | www.gross-partner.de
HGEsch Photography | www.hgesch.de
Hôtel Lutetia | www.hotellutetia.com
Karsten Thormaehlen | www.karstenthormaehlen.com
Lars Gruber Architektur fotografie | www.larsgruber.de
Marcel Kusch | www.marcelkusch.de
Museum Barberini | www.museum-barberini.de
Xaver Lockau | www.xaverlockau.de

English
2024 | 07
Errors and technical changes excepted.

© HAFI Beschläge GmbH 2024



hafi.de

Further HAFI product documents



HAFI
Partner of architecture

HAFI Design 216
English
2024 | 07